

PEAKED ROOF CANOPY DATA SHEET





**8 post basic canopy with powder coated framing*

DESIGN AND PURPOSE

THE PEAKED ROOF CANOPY OFFERS A STRAIGHTFORWARD AND DEPENDABLE SOLUTION FOR SHELTERING EQUIPMENT AND PEOPLE. ENGINEERED FOR DURABILITY AND VERSATILITY, IT FEATURES 1 1-GAUGE STEEL POSTS, 1 4-GAUGE CHANNEL, AND RECEIVER COMPONENTS, PROVIDING A LIGHTWEIGHT YET ROBUST STRUCTURE. AVAILABLE IN 4-, 6-, AND 8-POST CONFIGURATIONS, THIS CANOPY ADAPTS TO VARIOUS NEEDS AND SPACES. CHOOSE BETWEEN TWO ROOF STYLES—SINGLE SLOPE (SEE OUR BASIC CANOPY) OR PEAKED ROOF—TO BEST SUIT YOUR APPLICATION. ITS SIMPLE DESIGN ENSURES LOWER SHIPPING COSTS AND EASY INSTALLATION. EACH CANOPY IS SHIPPED AS A COMPLETE PACKAGE, INCLUDING POSTS, FRAMING, ROOFING, GUTTERS, DOWNSPOUTS, FASTENERS, REBAR CAGES, AND DETAILED ASSEMBLY INSTRUCTIONS. CUSTOMIZATION OPTIONS INCLUDE VARIOUS SIZES, ROOFING AND TRIM COLORS, AND FINISHES FOR POSTS AND FRAMING.

STANDARD SIZES

WHILE THE BASIC CANOPY CAN BE MADE IN ALMOST ANY SIZE, SEE OUR STANDARD SIZE CHART BELOW. THE HEIGHT OF THE CANOPY IS DEPENDENT ON THE POSTS. THE POSTS COME 12' LONG ALLOWING FOR PLENTY OF HEIGHT ADJUSTMENT.

DEPTH	WIDTH	9'	12'	15'	18'	21'	24'
10'			10'X12'	10'X15'	10'X18'	10'X21'	10'X24'
12'			12'X12'	12'X15'	12'X18'	12'X21'	12'X24'

ROOFING AND TRIM COLORS



Colors shown may vary due to digital representation. Color charts and actual color chips are available from McElroy Metal and McElroy Metal contractors and distributors.

PVDF indicates Kynar 500® Coating

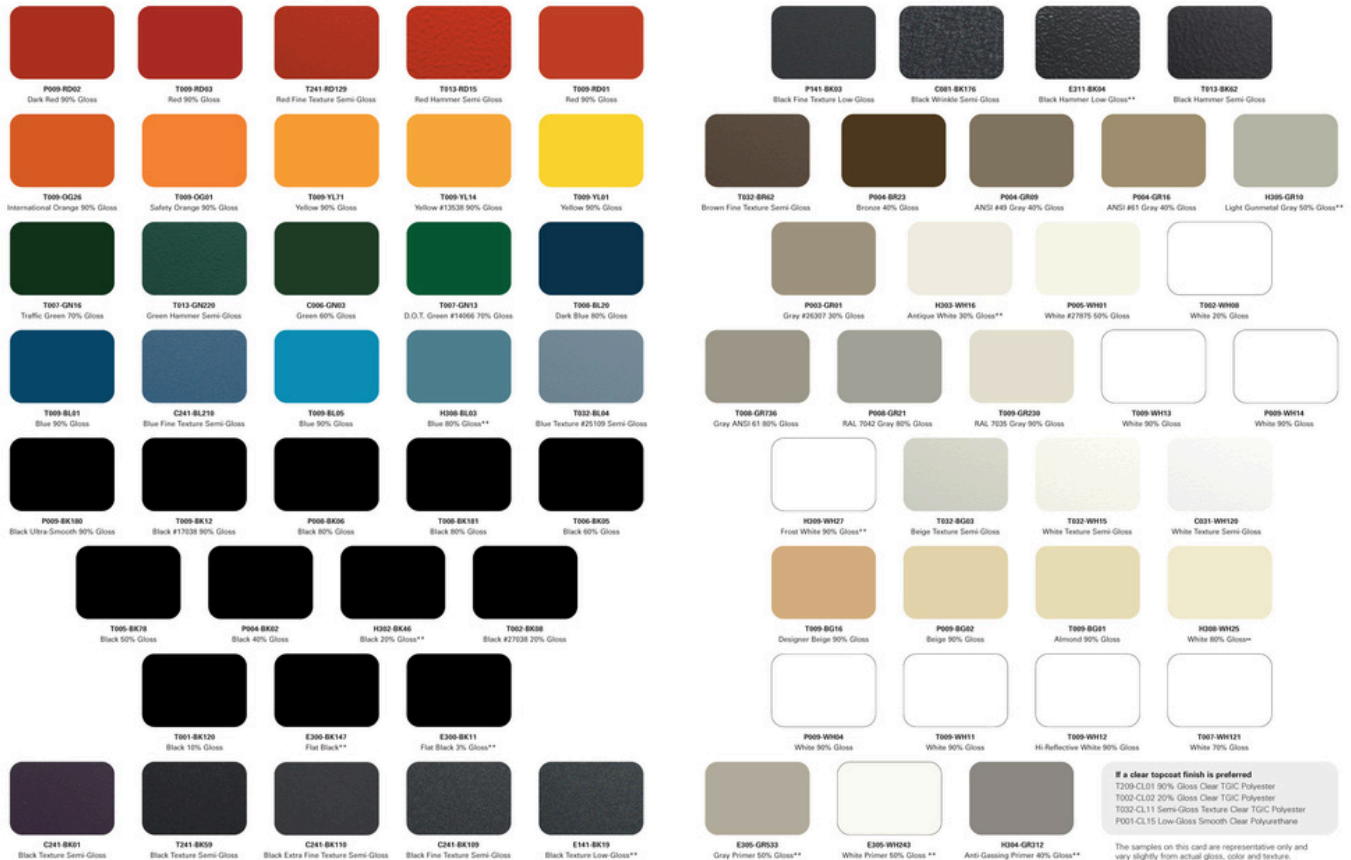
SMP indicates Silicone Modified Polyester Coating

All Standard colors are 29 gauge with Silicone Modified Polyester Coating.

* Brandywine and Matte Black are 26 gauge deep tone PVDF colors - Additional cost will apply.

POWDER COAT OVER GALVANIZING UPGRADE

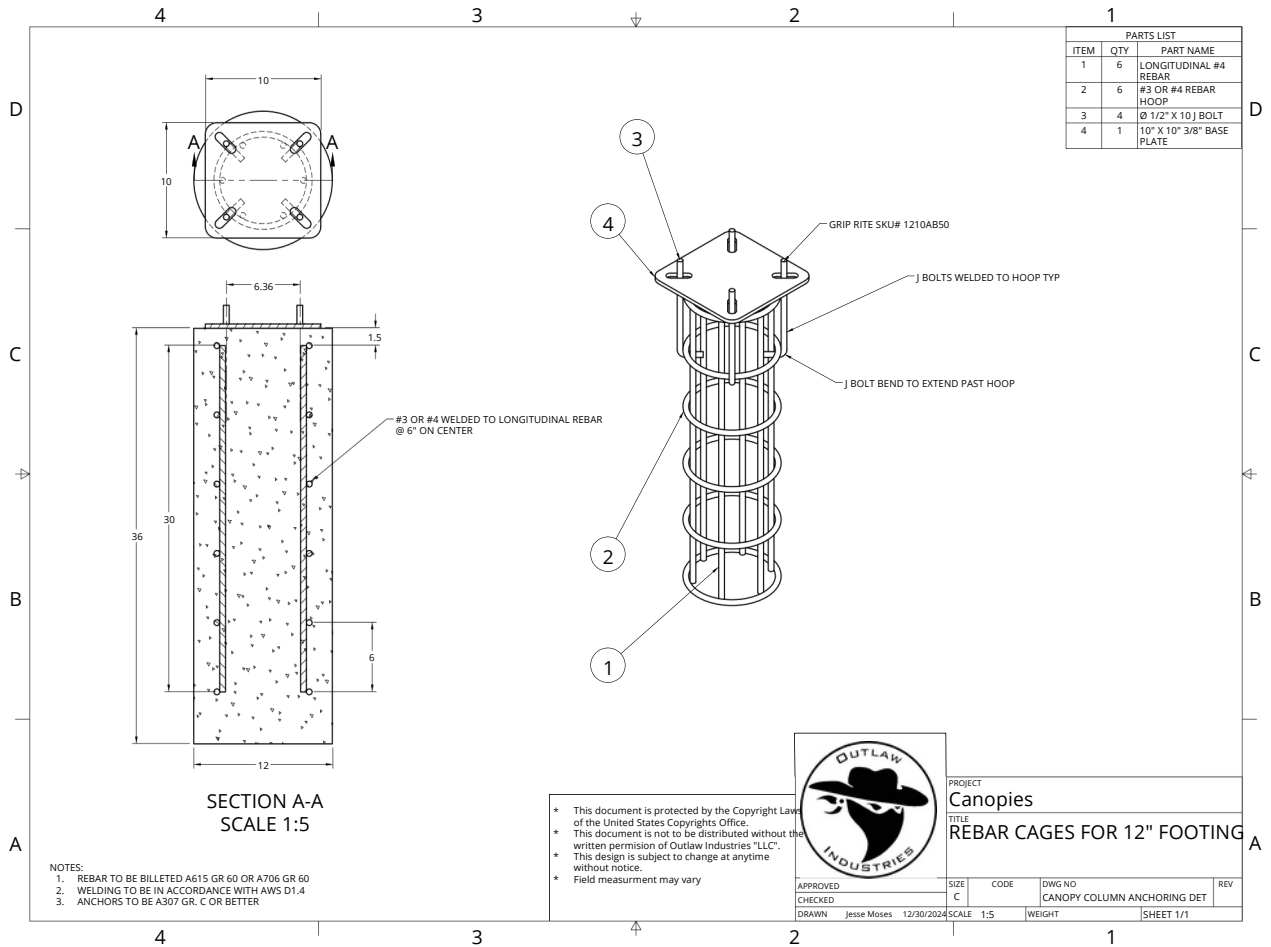
THE COLUMNS AND FRAMING STANDARD FINISH IS GALVANIZED, HOWEVER, IF DESIRED CAN BE UPGRADED TO BE POWDER COATED OVER GALVANIZED. SEE COMMON POWDER COAT COLORS BELOW.



COMPONENT/STRUCTURAL INFORMATION

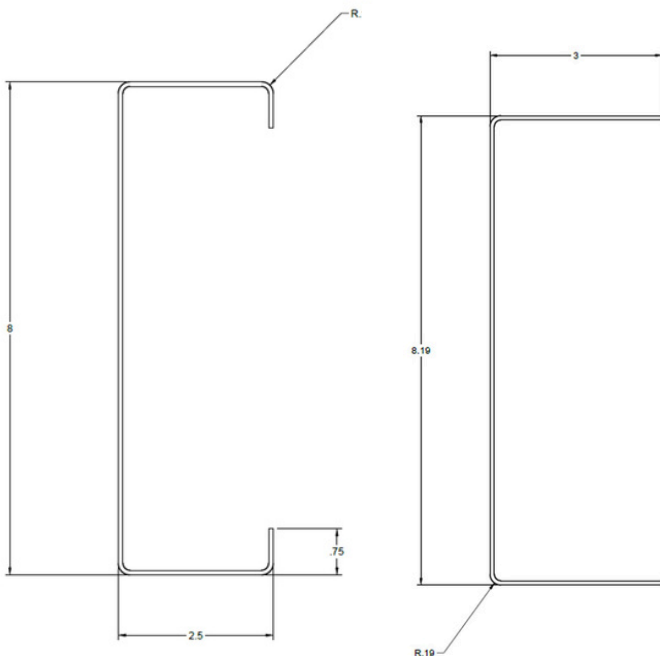
COLUMNS/REBAR CAGES

- 4x4 11 GAUGE GALVANIZED STEEL SQUARE TUBE WITH 10"x10"x3/8" BASE PLATE

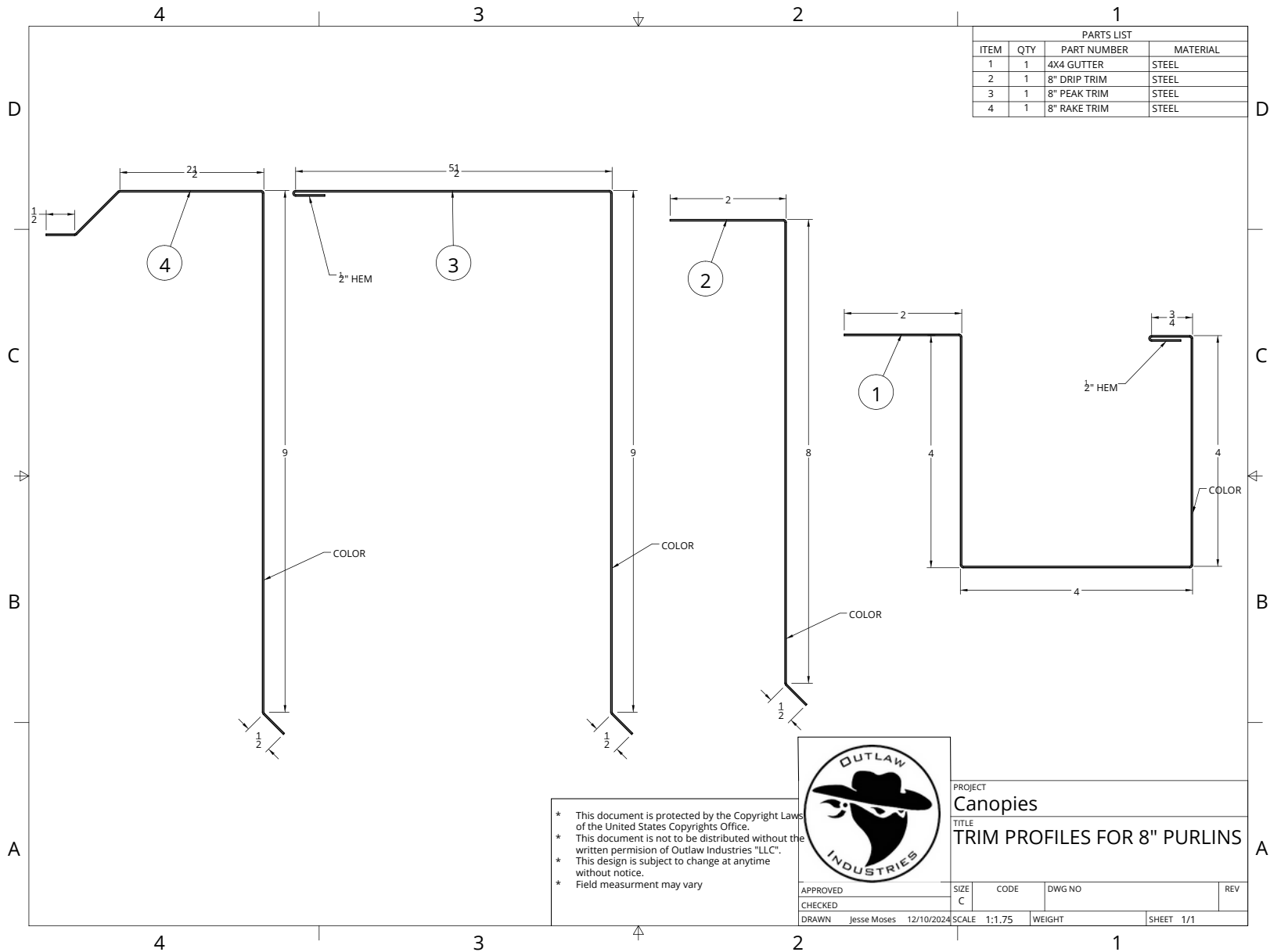


PURLINS

- C CHANNEL - 14GA 8"x2.5"
- RECEIVER - 14 GA 8"x3"



TRIM PROFILES



* This document is protected by the Copyright Laws of the United States Copyrights Office.
 * This document is not to be distributed without the written permission of Outlaw Industries "LLC".
 * This design is subject to change at anytime without notice.
 * Field measurement may vary



PROJECT Canopies			
TITLE TRIM PROFILES FOR 8" PURLINS			
APPROVED	SIZE C	CODE	DWG NO
CHECKED			REV
DRAWN Jesse Moses	12/10/2024	SCALE 1:1.75	WEIGHT SHEET 1/1

ENGINEERING

*****Standard basic canopies are not engineered. If engineering is required then we can provide engineered stamped drawings for an additional cost. The cost for engineering will be billed 100% up front. Because engineering requirements may raise the price of the canopy, once we have the stamped drawings back, we will evaluate the cost and provide a proposal based off the engineering requirements. *****

HAVE QUESTIONS?

☎ 1-800-590-0464

✉ SALES@OUTLAWINDUSTRIES.CO